

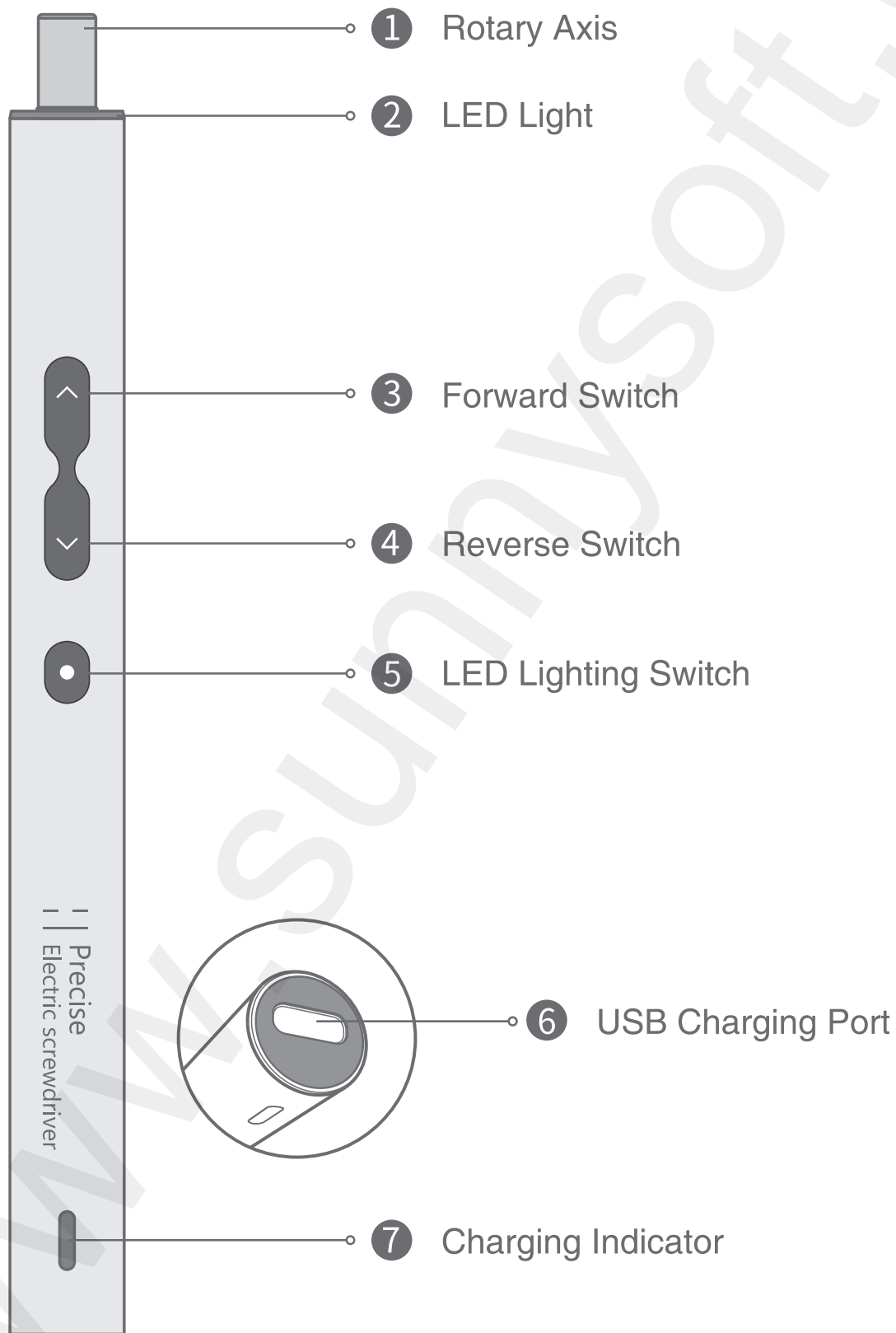
# 120in1

## Precise Electric Scrwdriver 120 Tool Set

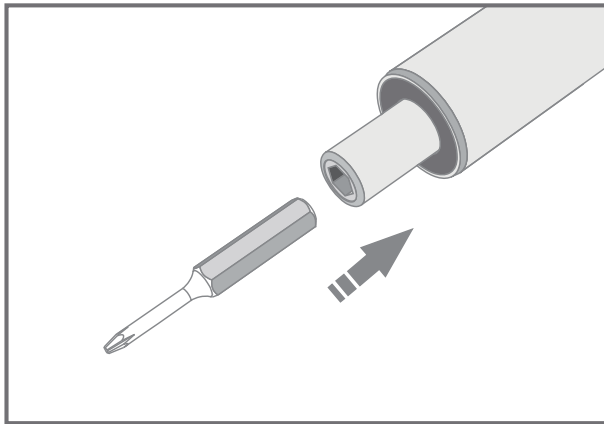
KS-882039



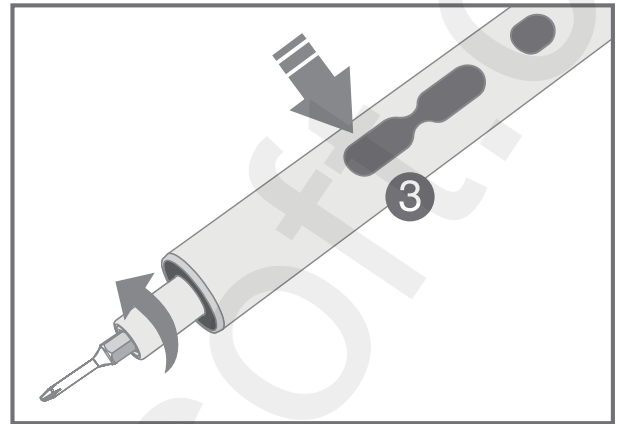
## PART DESCRIPTION



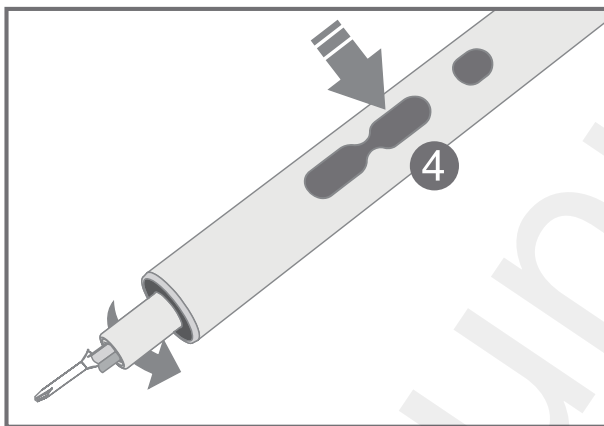
## USING STEPS



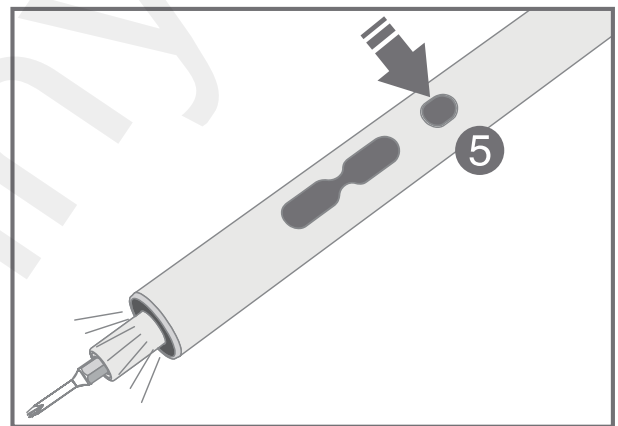
1. Put the bit out from the storage case and into the rotary axis.



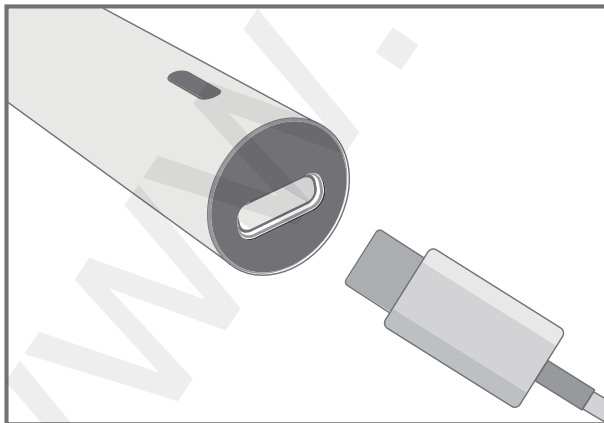
2. Press ③, tighten or screw the screws.



3. Press ④, loosen or unscrew the screws.



4. Press ⑤, turn on the light, Press again, turn off the light.



5. There is a Type-C USB charging port at the end of the screwdriver.

# CHARGING INSTRUCTION

When using the Type-C charging port, the charging indicator shows white means "charging", shows green means "full charge".

1. Please charge the screwdriver fully, and before using the screwdriver for the first time, the charging time shall not exceed 2.5 hours.
2. Please charge the screwdriver at least once a month to maintain a good performance.
3. Only use the provided charging cable to charge the screwdriver.

## 22 DISASSEMBLY ACCESSORIES

- 1 x Electric screwdriver handle
- 1 x Plastic extension soft rod
- 1 x Iron crowbar
- 1 x 207 crowbar
- 1 x Charging cable
- 1 x Through needle
- 6 x Thin triangle sheet
- 1 x Shovel type crowbar
- 1 x Small cleaning brush
- 2 x Double blue crowbar
- 1 x Small degaussing device
- 1 x Stainless steel suction cup
- 1 x ESD-15 crimping 1.5 thick spray paint tweezers
- 1 x 48 black and white universal magnetic screw memory pad

# PRODUCT SPECIFICATION

Battery Type: Li Battery

Charging Time: <50mins

Size of screwdriver: 178X $\Phi$ 15.4

Net weight of screwdriver: 54g

Electric Torque: 0.25-0.35N.m

Battery Capacity: 350mAh

Free Speed: 200r/min

Manual Torque: 3N.m

Voltage: 3.7V-DC

## 100PCS bit

**Bits Size:** C4 X 28

**Material:** CRV phosphating ash

⊕ PH0000, PH000\*2, PH00\*2, PH0, PH1, PH2

⊙ M2.5, M3.0, M3.5, M4.0, M4.5, M5.0, M5.5

⊛ T6H, T7H, T8H, T9H, T10H, T15H, T20H, T25H

⊙ U2.0, U2.6, U3.0, U4, U6, U8, U10

⊙ Y000\*2, Y00, Y0, Y1, Y2

⊙ SQ0, SQ1, SQ2, SQ3

⊙ 2.0, 2.3, 2.6, 3.0

⊙ SL1.0, SL1.3, SL1.5, SL2.0, SL2.5  
SL3.0, SL3.5, SL4.0, SL4.5, SL5.0

⊙ H0.7, H0.9, H1.3, H1.5, H2.0, H2.5  
H3.0, H3.5, H4.0, H4.5, H5.0, H6.0

⊙ H1/16, H5/64, H3/32, H7/64, H1/8  
H9/64, H5/32, H3/16, H4-H1/4

★ 2.0

⊕ 2.0, 2.5

⊖ Scraper

⊖ Pry Bar

⊕ PH2

⊙ 3.0

⊙ U

⊙ G3.8 G4.5

⊙ PZ0, PZ1, PZ2

⊙ 0.8, 1.0, 0.3, 0.1

★ AP2\*2, AP5, AP6

★ T1, T2, T3, T4, T5

## SAFETY WARM TIP

**Warning!** Please read all the provided safety warm tips, specifications, pictures and provision.

### Electrical Safety

1. Please do not expose the screwdriver to the sun or humidity.
2. If you can't avoid putting the screwdriver in the humid environment., please wear the silicone sleeves to reduce risk.
3. If using the electric screwdriver in the electrostatic environment, install an electrostatic ring to demagnetize the driver bits to reduce operation accidents.

### Personal Safety

1. The electric screwdriver is a little dangerous, please do not let the babies or children use it to avoid injury.
2. Please do not put it in your pockets or bags to avoid injury caused by accidental operation of the electric screwdriver.
3. When operating the electric screwdriver, the holding height shall not be too high or too low to ensure that the electric screwdriver can be controlled under other external forces.

## MAINTENANCE

1. Ask professional maintenance staffs to use the same spare parts to repair the electric screwdriver. Which will ensure the safety of the electric screwdriver being repaired.
2. Never repair the damaged battery pack. The battery pack just could be repaired by the producer or the authorized service providers.